

FS-AEON insert compatible with Aeons End®

Insert has space for numerous expansions, and is also compatible with both the War Eternal® and The New Age® games.



Assembly Instructions

The package contains 4 sheets, two of them are identical to the other two.

The part marked in sheet A2 is to be discarded.

After assembly the trays are put in four layers in the original game box.

Ordinary PVA glue is required when assembling each tray.

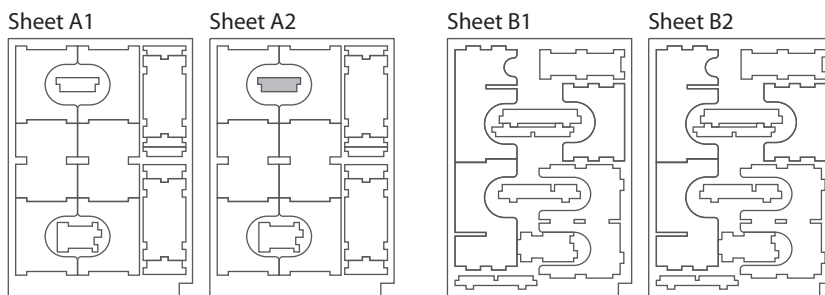
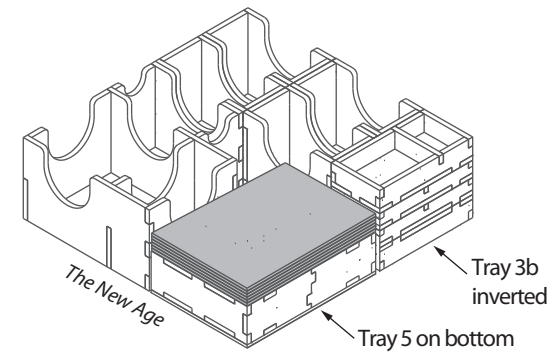
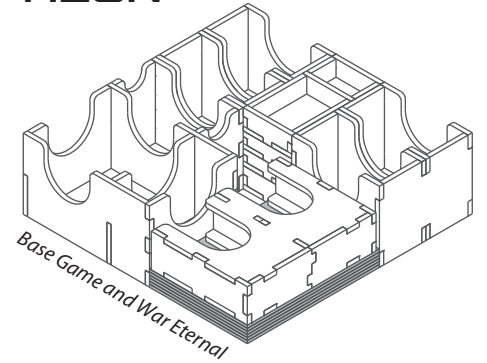
Please make sure you dry-assemble each tray correctly before gluing it together.

Please check www.foldedspace.net for general assembly tips.

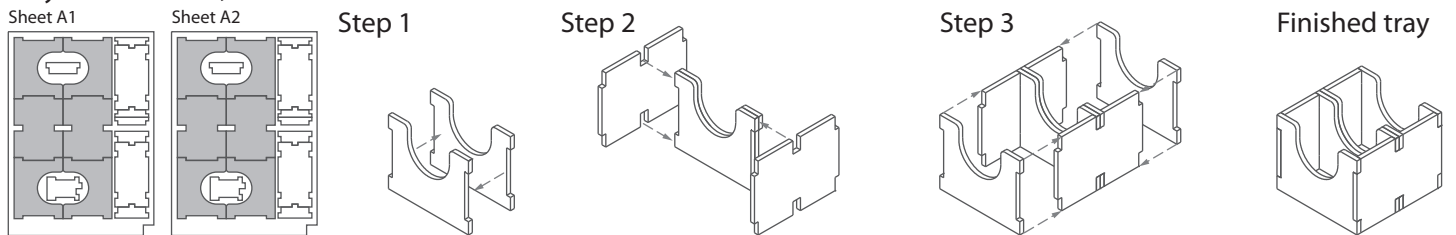
Insert has space for over 840 sleeved and 1,300 unsleeved cards.

For The New Age the tray layout is slightly different as shown on the right.

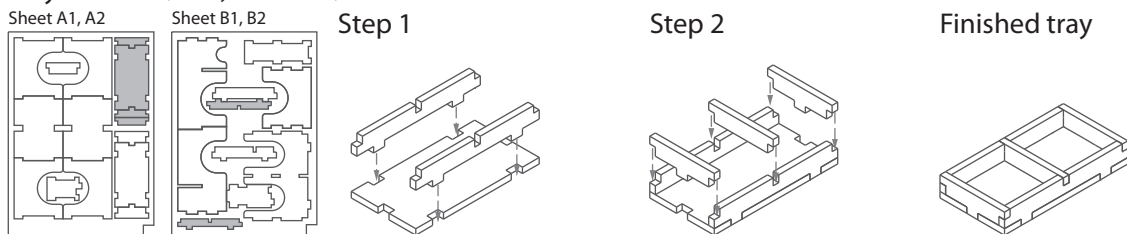
FS-AEON



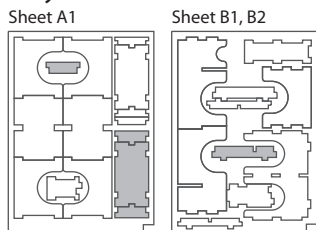
Tray 1a & 1b (the trays are identical)



Tray 2a & 2b (the trays are identical)

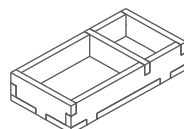


Tray 3a

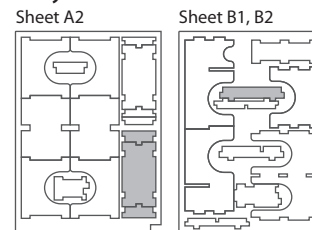


To assemble repeat steps of Tray 2a & 2b.

Finished tray

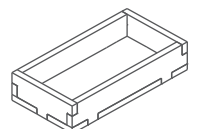


Tray 3b



To assemble repeat steps of Tray 2a & 2b.

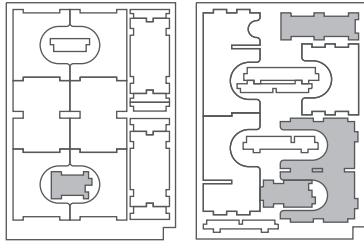
Finished tray



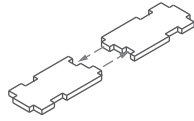
Tray 4

Sheet A1, A2

Sheet B1, B2



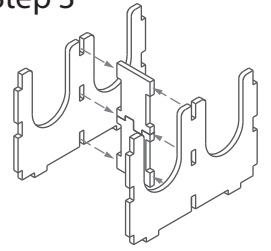
Step 1



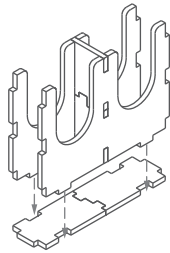
Step 2



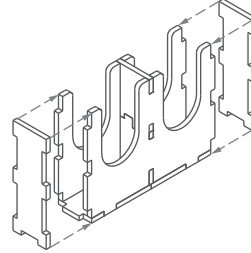
Step 3



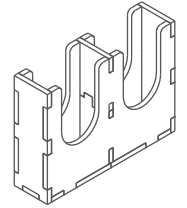
Step 4



Step 5



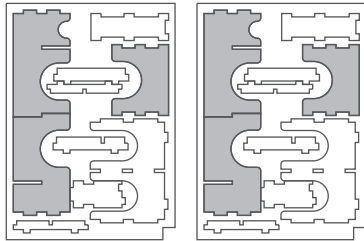
Finished tray



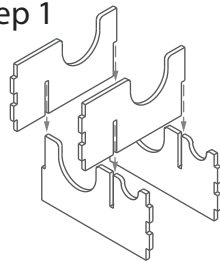
Tray 5

Sheet B1

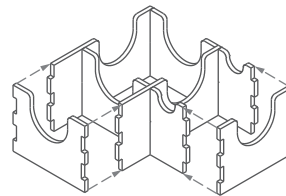
Sheet B2



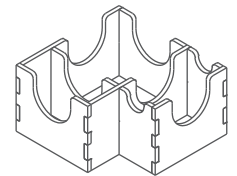
Step 1



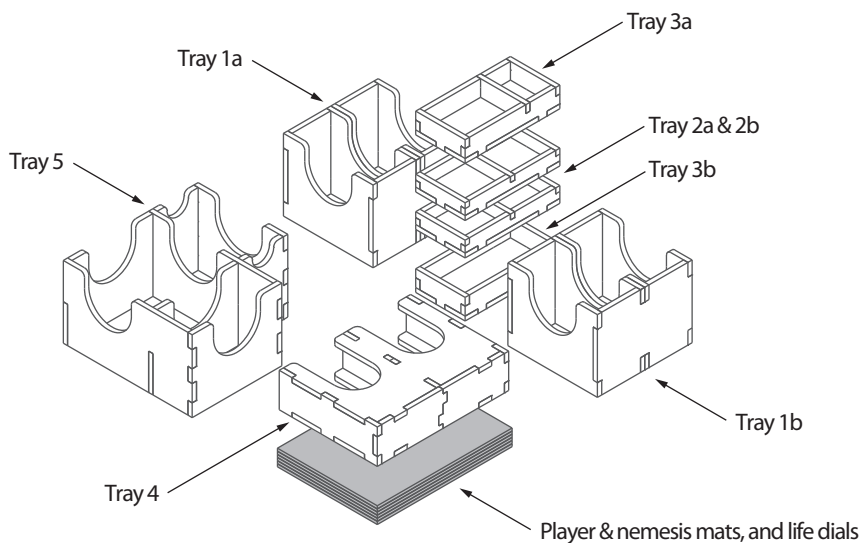
Step 2



Finished tray



FS-AEON



Please check www.foldedspace.net for photos of this insert in use.

Tray legend:

- Tray 1a - spell and randomizer cards
- Tray 1b - nemesis cards
- Tray 2a - life and other small tokens
- Tray 2b - pulse and fury/husk tokens
- Tray 3a - plastic gems and other tokens
- Tray 3b - dice and large tokens
- Tray 4 - gem cards
- Tray 5 - breach tiles and other cards