

FS-STAG insert

compatible with Stone Age[®],

incl. the Stone Age: The Expansion[®] and The Mammoth Herd[®] expansions



Assembly Instructions

The package contains 5 sheets, two identical to the other two and one different sheet.

The part marked in sheet B1 is to be discarded.

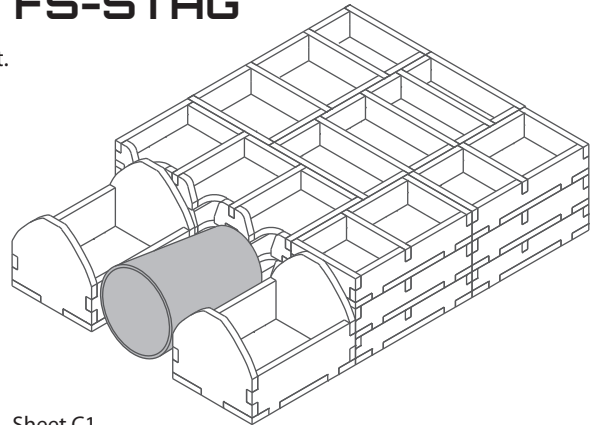
After assembly the trays are put in three layers in the original game box.

Ordinary PVA glue is required when assembling each tray.

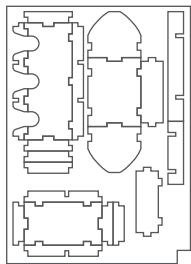
Please make sure you dry-assemble each tray correctly before gluing it together.

Please check www.foldedspace.net for general assembly tips.

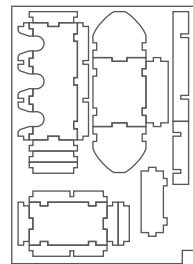
FS-STAG



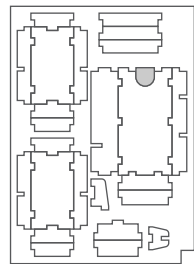
Sheet A1



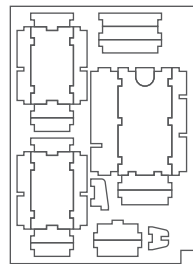
Sheet A2



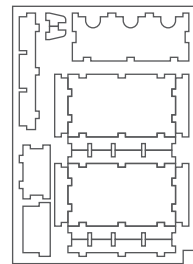
Sheet B1



Sheet B2



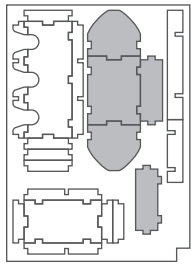
Sheet C1



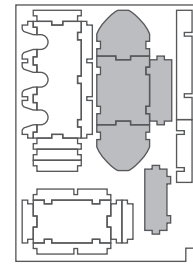
Tray 1a & 1b

(the trays are identical)

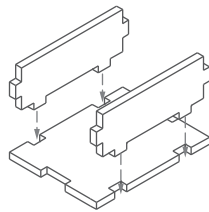
Sheet A1



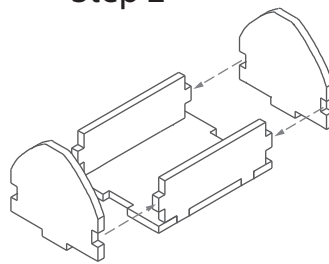
Sheet A2



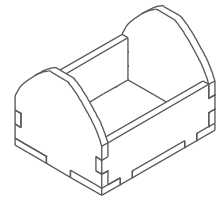
Step 1



Step 2



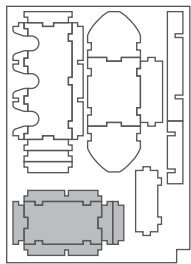
Finished tray



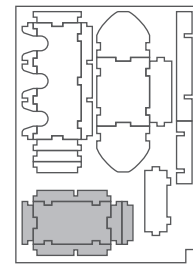
Tray 2a & 2b

(the trays are identical)

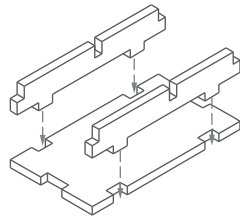
Sheet A1



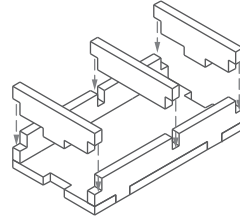
Sheet A2



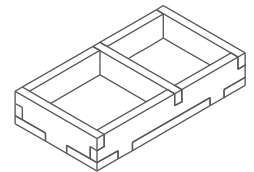
Step 1



Step 2



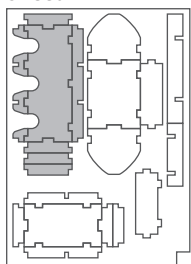
Finished tray



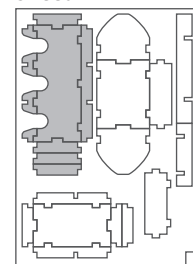
Tray 3a & 3b

(the trays are identical)

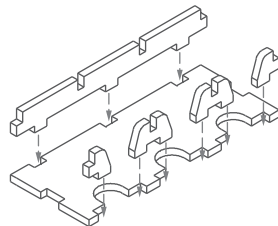
Sheet A1



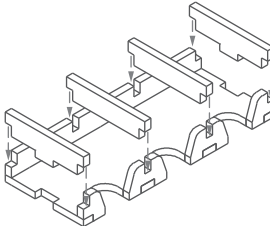
Sheet A2



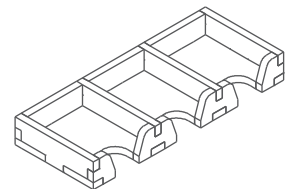
Step 1

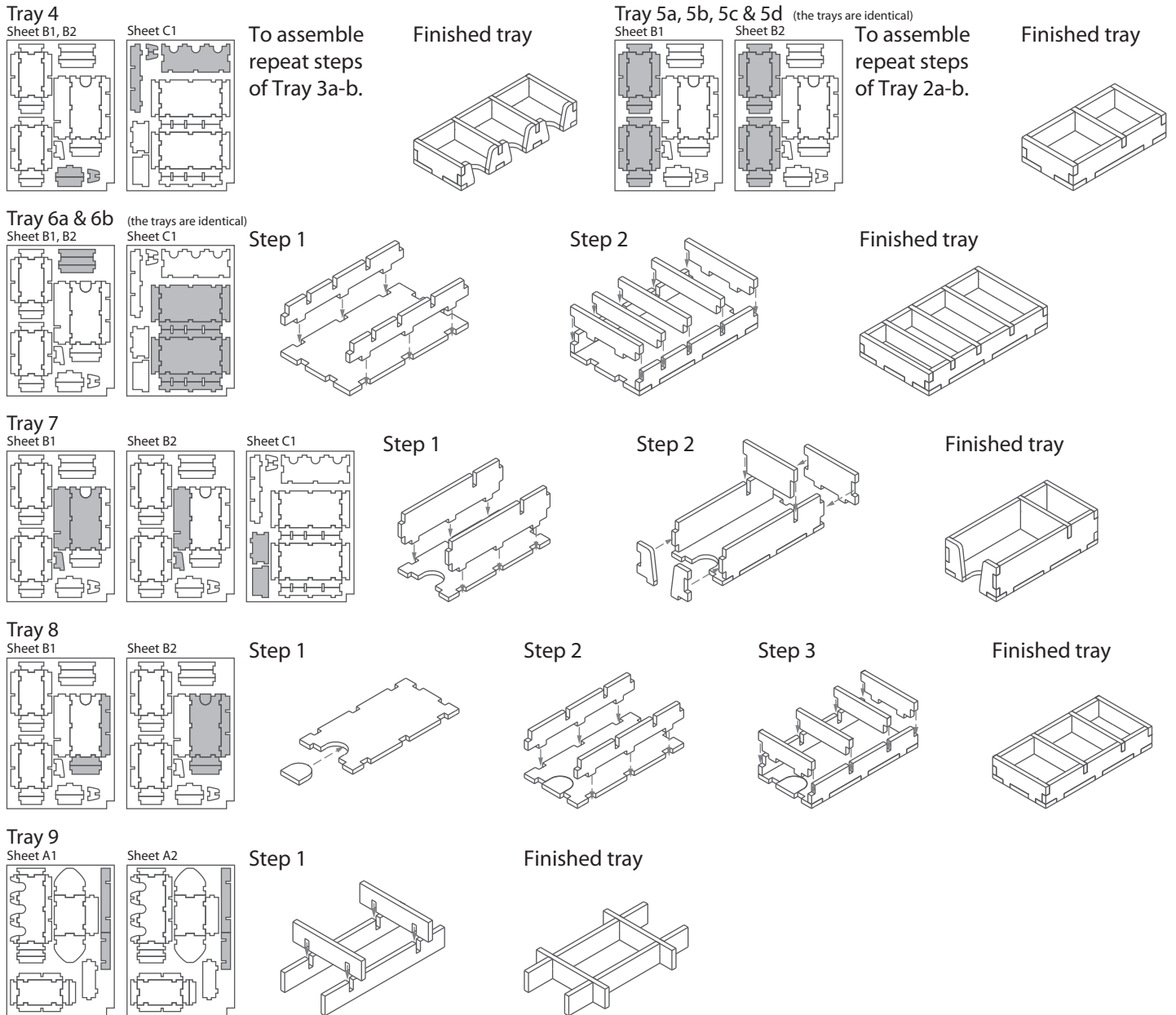


Step 2

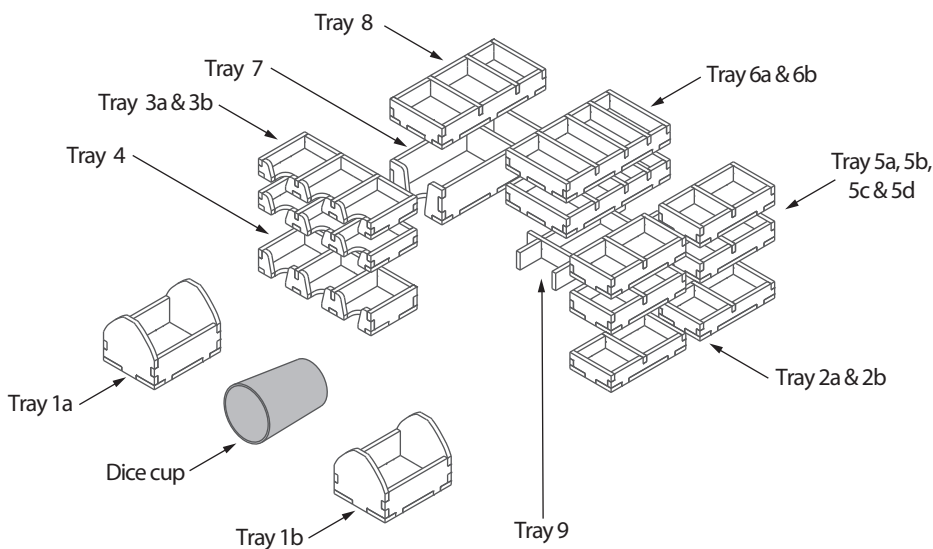


Finished tray





FS-STAG



Please check www.foldedspace.net for photos of this insert in use.

Tray legend:

- Tray 1a, b - filler trays, used for first player and mammoth markers
- Tray 2a - player pieces
- Tray 2b - gold resource
- Tray 3a, b - building tiles
- Tray 4 - building and mammoth bonus tiles
- Tray 5a, b, c, d - player pieces
- Tray 6a - food tiles
- Tray 6b - tool tiles and jewelry resources
- Tray 7 - cards and dice
- Tray 8 - wood, clay and stone resources
- Tray 9 - filler tray

Note: Tray 1a can be used during game play to hold the five meeples of each player as the general supply.