

# FS-XIA insert

compatible with XIA: Legends of a Drift System<sup>®</sup>,

incl. the Embers of a Forsaken Star<sup>®</sup>, Sellsword<sup>®</sup> & Missions and Powers<sup>®</sup> expansions



## Assembly Instructions

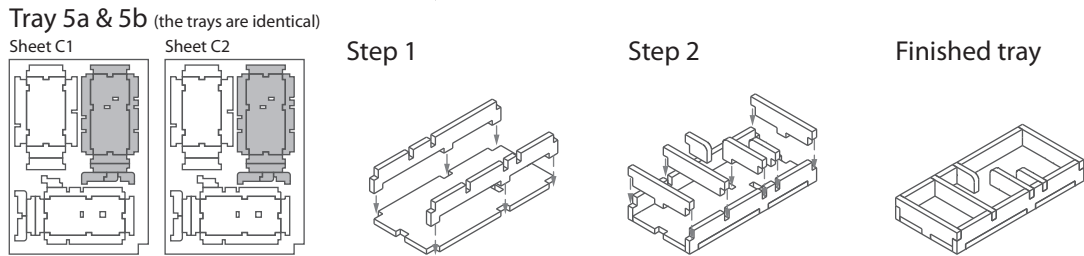
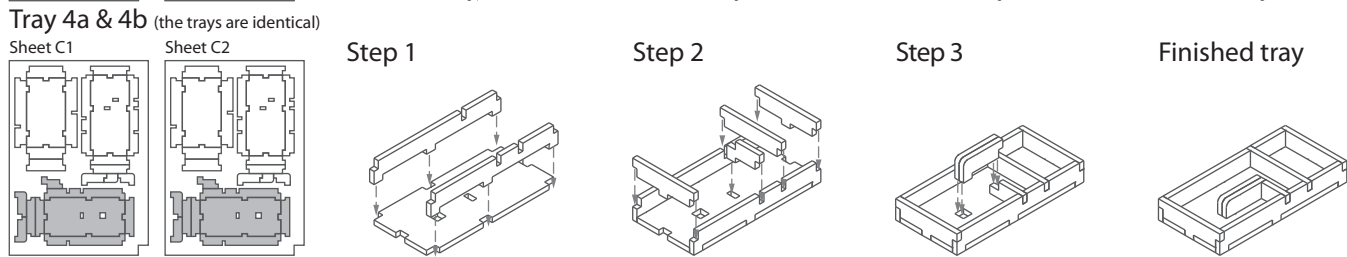
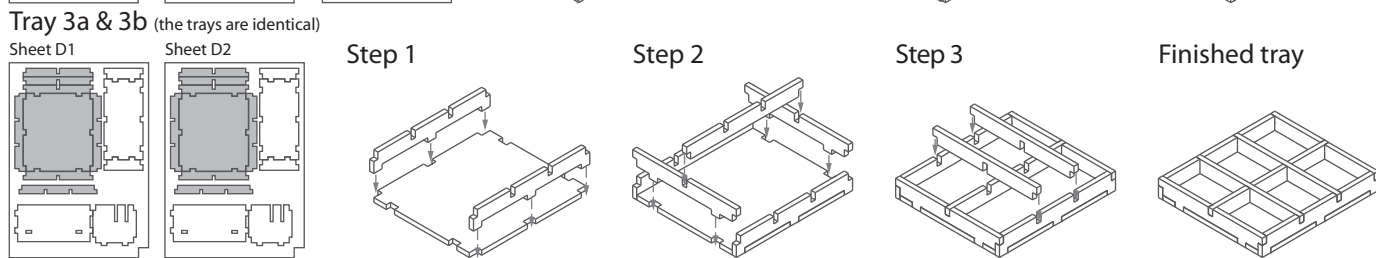
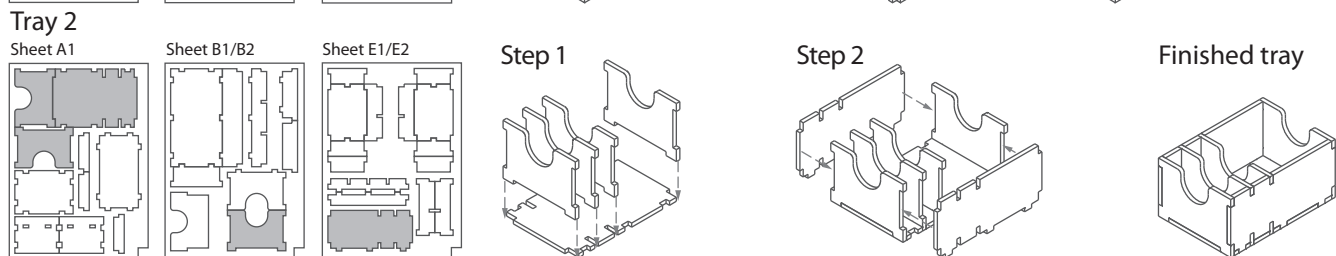
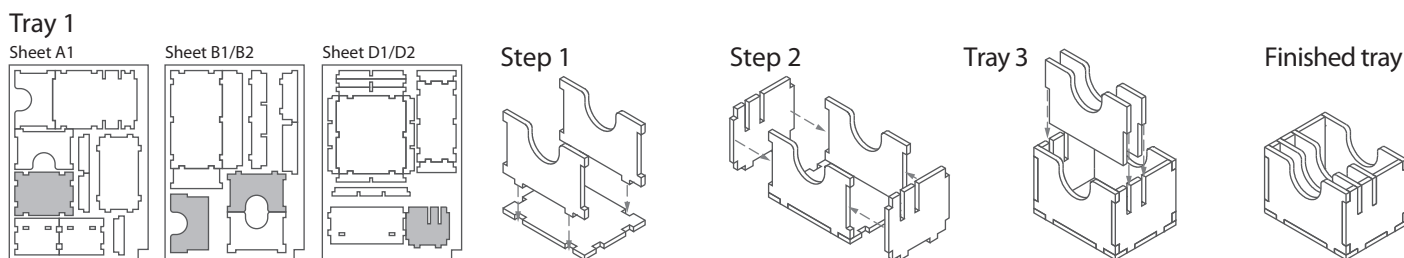
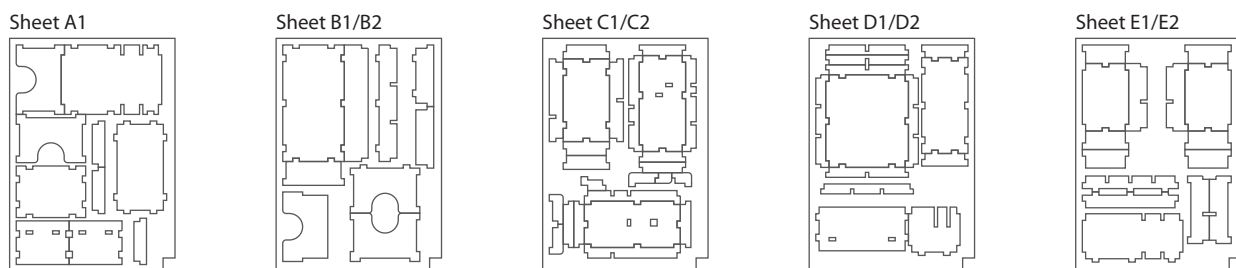
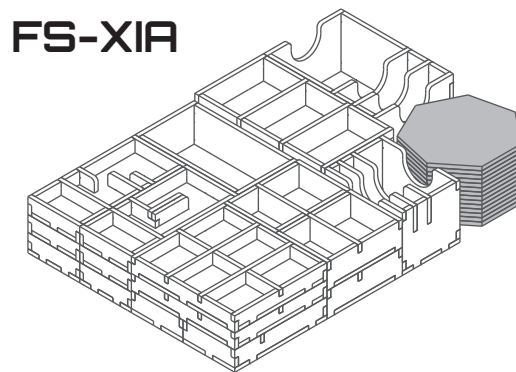
The package contains 9 sheets, four identical to the other four and one different sheet.

After assembly the trays are put in three layers in the original game box.

Ordinary PVA glue is required when assembling each tray.

Please make sure you dry-assemble each tray correctly before gluing it together.

Please check [www.foldedspace.net](http://www.foldedspace.net) for general assembly tips.



# FS-XIA insert compatible with XIA: Legends of a Drift System®,

incl. the Embers of a Forsaken Star®, Sellsword® & Missions and Powers® expansions



**Tray 6**  
Sheet A1, Sheet D1, Sheet E1/E2  
Step 1, Step 2, Finished tray

**Tray 7a**  
Sheet B1, Sheet B2  
To assemble repeat steps of Tray 6. Finished tray

**Tray 7b** (the tray is used upside-down under the Tray 7a)  
Sheet B1, Sheet B2  
To assemble repeat steps of Tray 6. Finished tray

**Tray 8**  
Sheet D2, Sheet E1/E2  
To assemble repeat steps of Tray 6. Finished tray

**Tray 9a, 9b, 9c & 9d** (the trays are identical)  
Sheet E1, Sheet E2  
To assemble repeat steps of Tray 6. Finished tray

**Tray 10**  
Sheet A1, Sheet D1/D2  
Step 1, Step 2, Finished tray

**Tray 11a**  
Sheet C1, Sheet C2  
Step 1, Step 2, Step 3, Finished tray

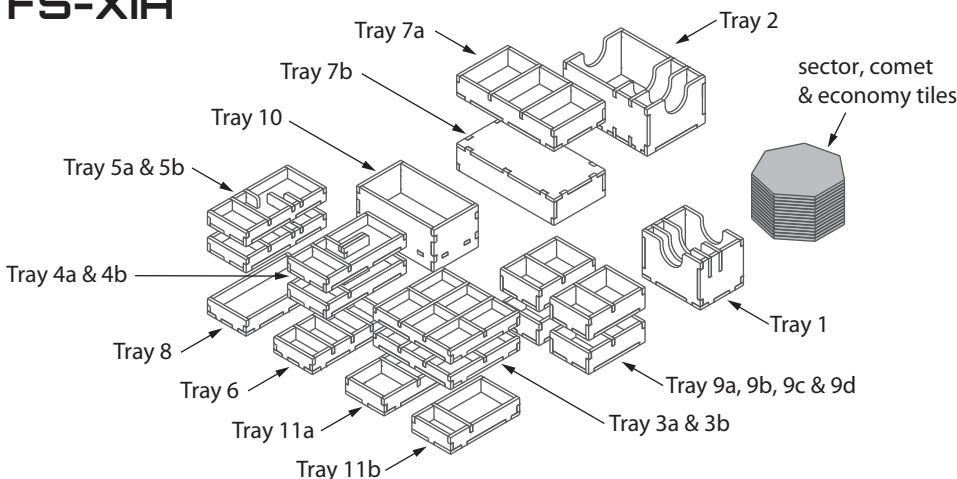
**Tray 11b**  
Sheet C1, Sheet C2  
To assemble repeat steps of Tray 11a. Finished tray

Please check [www.foldedspace.net](http://www.foldedspace.net) for photos of this insert in use.

## Tray legend:

- Tray 1 - ability, solo, and other cards
- Tray 2 - mission, event and title cards
- Tray 3a - cargo cubes
- Tray 3b - player pieces and other tokens
- Tray 4a, b - blaster & missile outfits
- Tray 5a, b - shield & engine outfits
- Tray 6 - mod tiles
- Tray 7a - ship miniatures
- Tray 7b - filler tray, placed inverted in box
- Tray 8 - cargo/armour outfits
- Tray 9a, b - damage markers
- Tray 9c - relic, outlaw & event tokens
- Tray 9d - dice and orange 3,000 credit tokens
- Tray 10 - flight stands
- Tray 11a - exploration tokens
- Tray 11b - credit tokens

## FS-XIA



**Tip:** Keep the instructions in the bottom of your board game box as a reminder of how the insert fits together.