

FS-MAK insert

compatible with the Mage Knight Board Game®,

incl. Shades of Tezla®, Krang Character® and The Lost Legion® expansions



Assembly Instructions

The package contains 7 sheets, three identical to the other three and one different sheet.

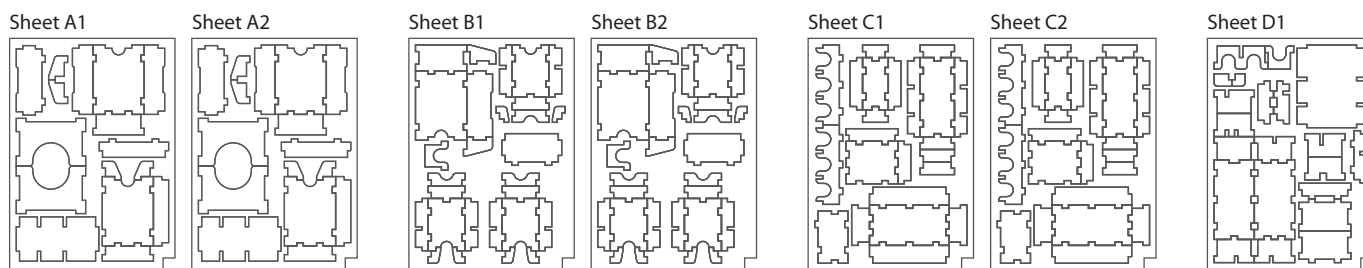
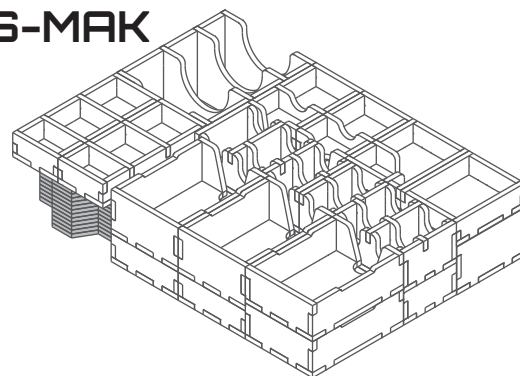
After assembly the trays are put in three layers in the original game box.

Ordinary PVA glue is required when assembling each tray.

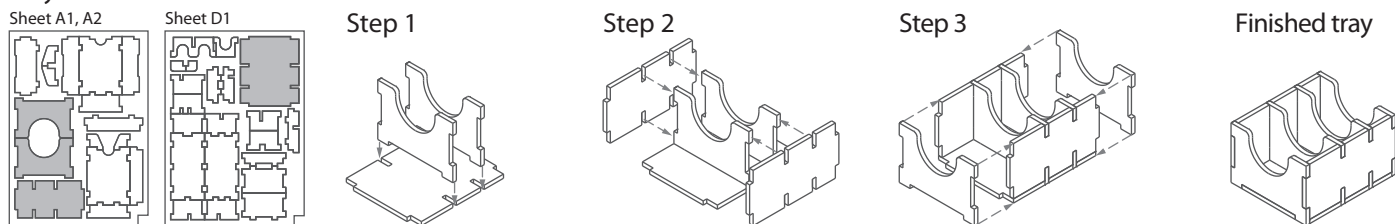
Please make sure you dry-assemble each tray correctly before gluing it together.

Please check www.foldedspace.net for general assembly tips.

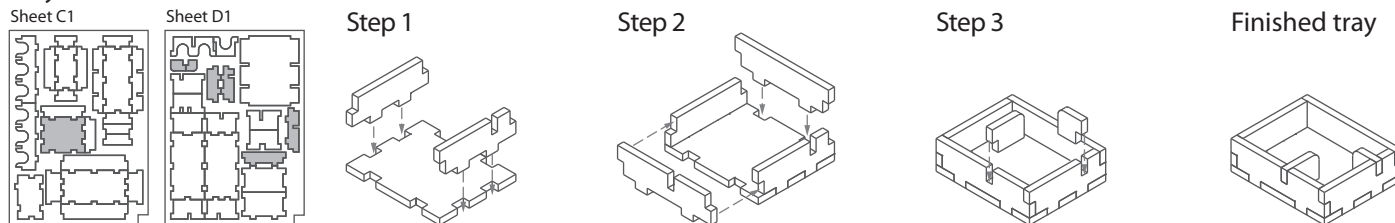
FS-MAK



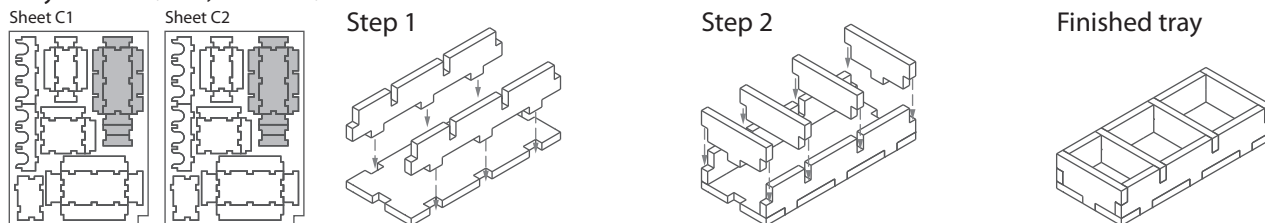
Tray 1



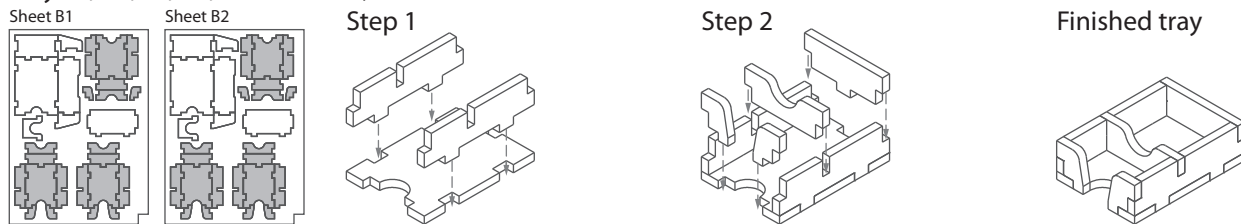
Tray 2



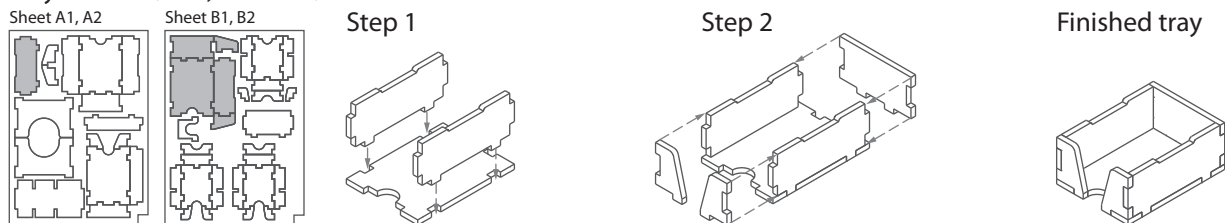
Tray 3a & 3b (the trays are identical)



Tray 4a, 4b, 4c, 4d, 4e & 4f (the trays are identical)



Tray 5a & 5b (the trays are identical)

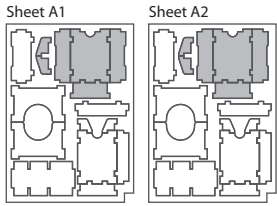


FS-MAK insert compatible with the Mage Knight Board Game®,

incl. Shades of Tezla®, Krang Character® and The Lost Legion® expansions



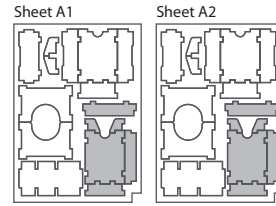
Tray 6a & 6b (the trays are identical)



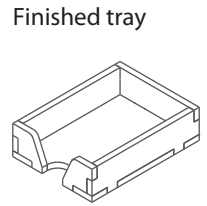
To assemble repeat steps of Tray 5a & 5b.



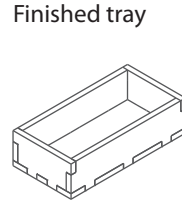
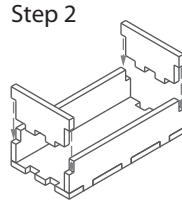
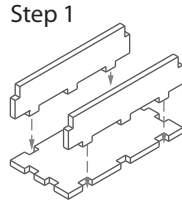
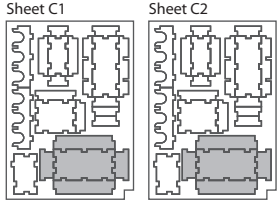
Tray 7a & 7b (the trays are identical)



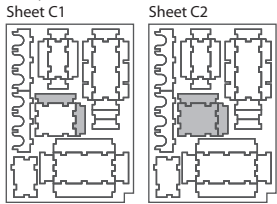
To assemble repeat steps of Tray 5a & 5b.



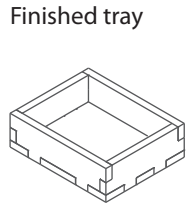
Tray 8a & 8b (the trays are identical)



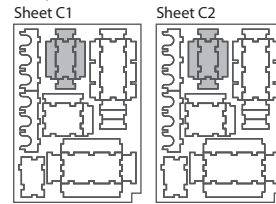
Tray 9



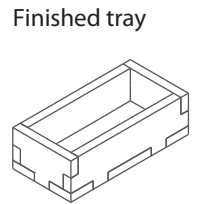
To assemble repeat steps of Tray 8a & 8b.



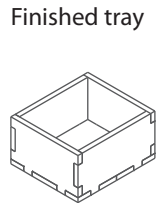
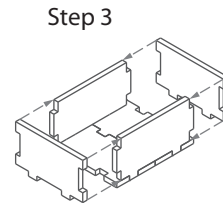
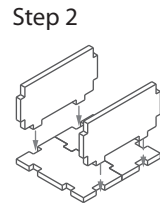
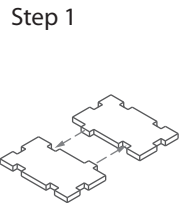
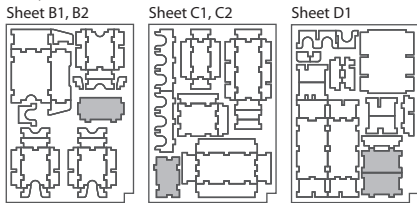
Tray 10a & 10b (the trays are identical)



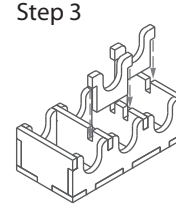
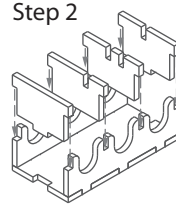
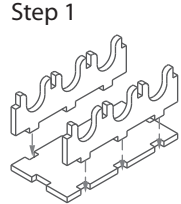
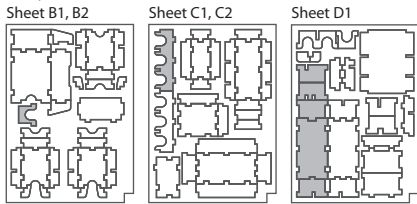
To assemble repeat steps of Tray 8a & 8b.



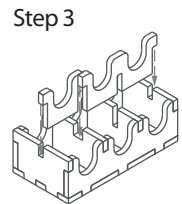
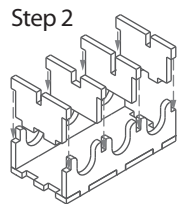
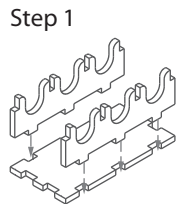
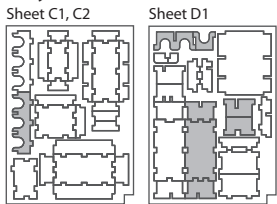
Tray 11



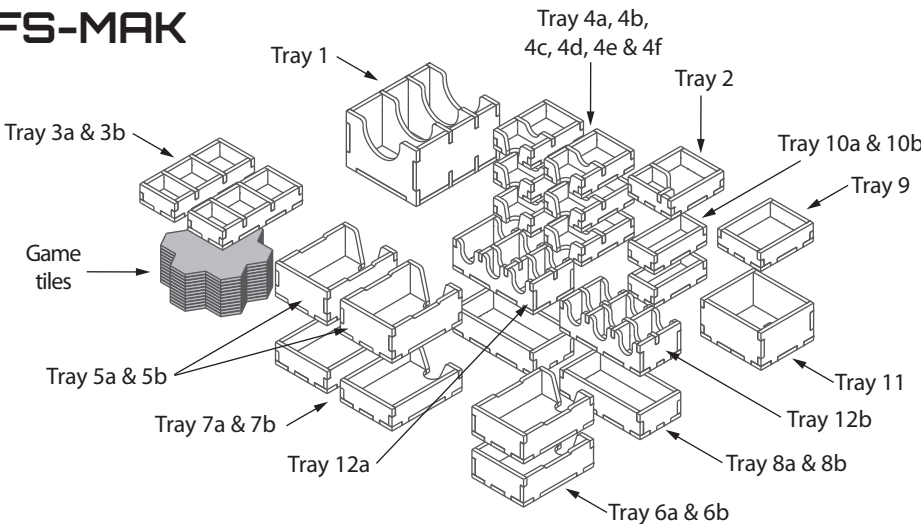
Tray 12a



Tray 12b



FS-MAK



Please check www.foldedspace.net for photos of this insert in use.

Tray legend:

- Tray 1 - hero decks and other game cards
- Tray 2 - player tokens
- Tray 3a, b - mana crystals
- Tray 4a, b, c, d, e, f - player tokens
- Tray 5a, b - advanced action and wound cards
- Tray 6a, b - regular and elite unit cards
- Tray 7a, b - spell and artifact cards
- Tray 8a, b - player figures
- Tray 9 - mana dice and other tokens
- Tray 10a, b - faction tokens
- Tray 11 - Volkare and city figures
- Tray 12a, b - enemy and ruin tokens

Tip: Keep the instructions in the bottom of your board game box as a reminder of how the insert fits together.