

FS-MARCH insert compatible with Marvel Champions®

incl. space for over 900 sleeved or 1,400 un-sleeved cards

Assembly Instructions

The package contains 4 sheets, two of them are identical to the other two.

The part marked in grey on sheet A2 is to be discarded.

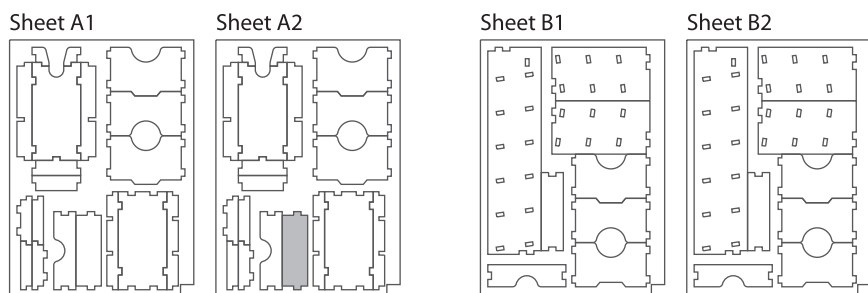
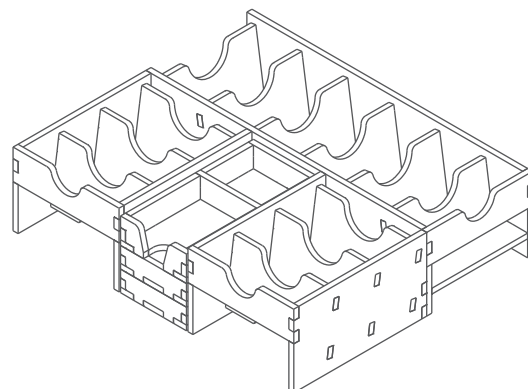
After assembly the trays are put in three layers in the original game box.

Ordinary PVA glue is required when assembling each tray.

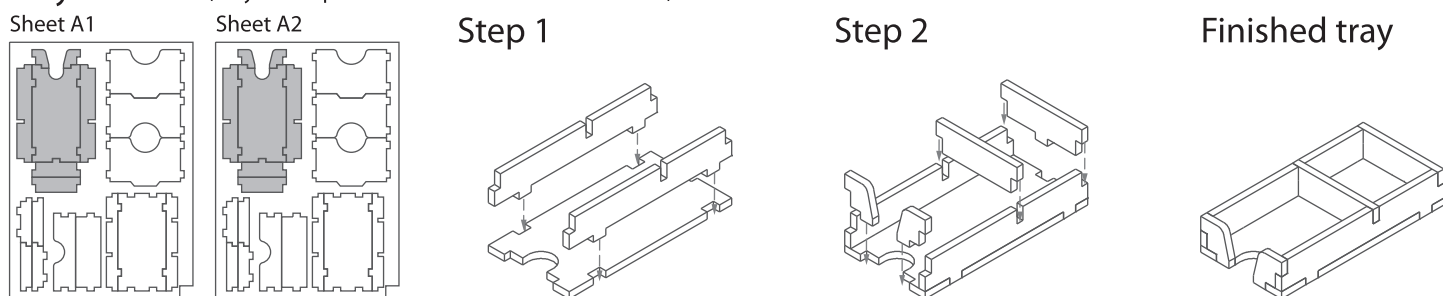
Please make sure you dry-assemble each tray correctly before gluing it together.

Please check www.foldedspace.net for general assembly tips.

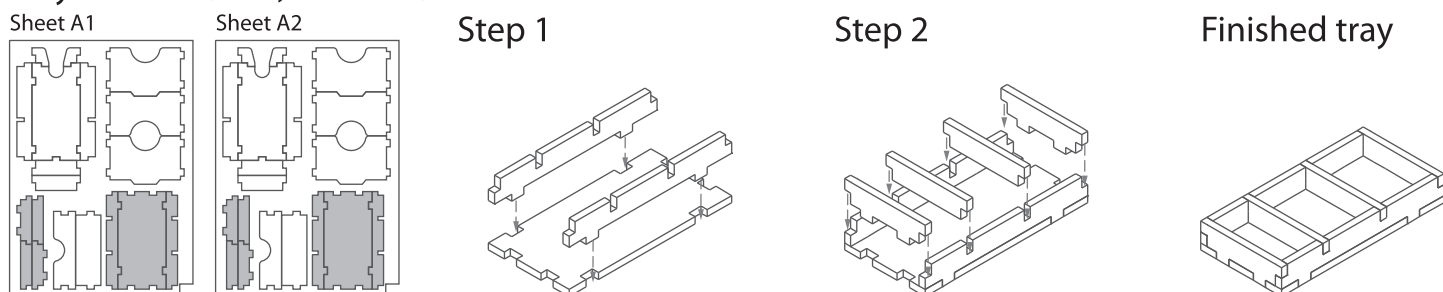
FS-MARCH



Tray 1a & 1b (Tray 1b is optional and is not used in this insert)



Tray 2a & 2b (the trays are identical)

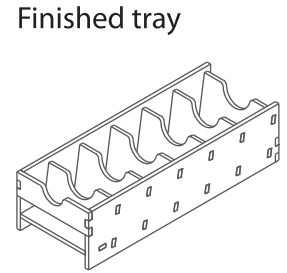
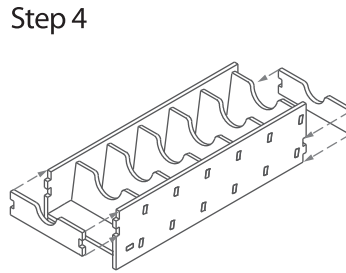
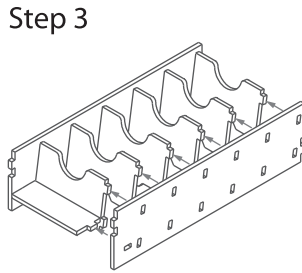
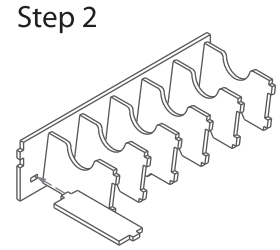
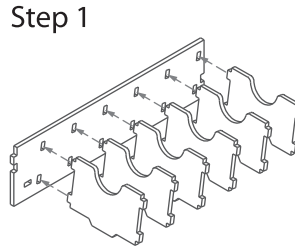
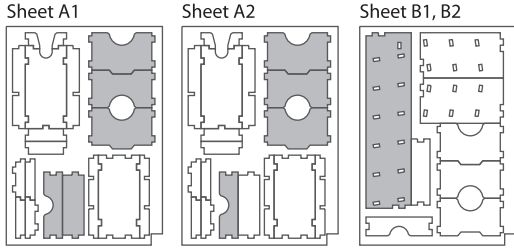


FS-MARCH insert compatible with Marvel Champions®

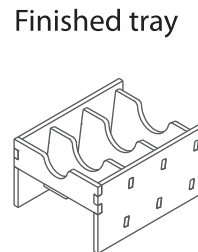
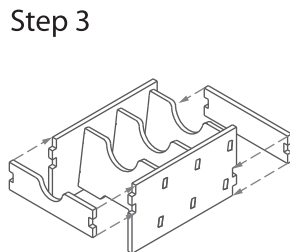
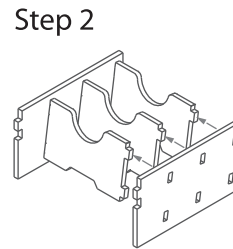
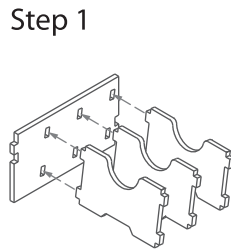
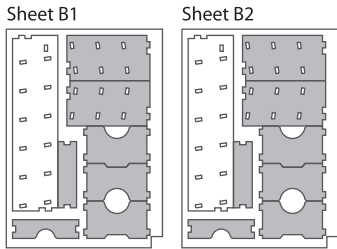
incl. space for over 900 sleeved or 1,400 un-sleeved cards



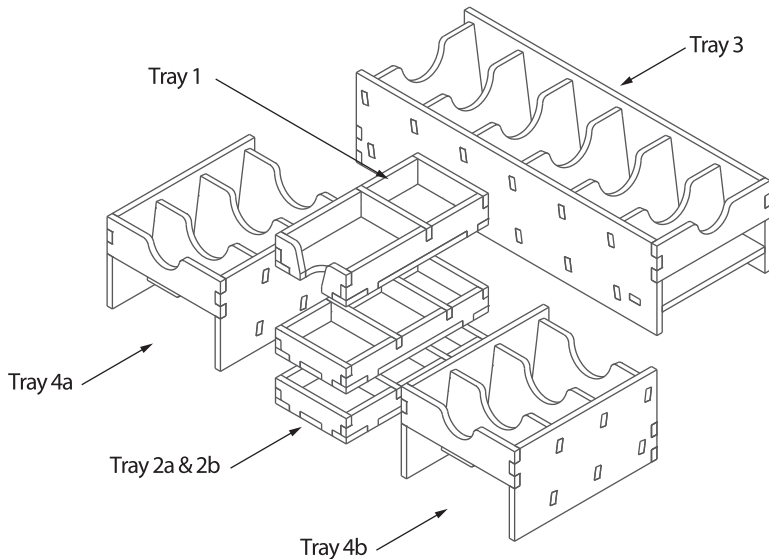
Tray 3



Tray 4a & 4b (the trays are identical)



FS-MARCH



Please check www.foldedspace.net for photos of this insert in use.

Tray legend:

- Tray 1 - status cards, acceleration & first player tokens
- Tray 2a - damage tokens
- Tray 2b - threat tokens & all-purpose counters
- Tray 3 - card decks & player hit point dials
- Tray 4a, b - card decks

Note: the villain hit point dial should be placed on top of Tray 1. Also note that the instruction booklets from the Scenario Packs can be added on top of the card decks in Trays 4a & 4b.

Tip: Keep the instructions in the bottom of your board game box as a reminder of how the insert fits together.