

# FS-FGLO insert compatible with Founders of Gloomhaven®.



## Assembly Instructions

The package contains 6 sheets, three of them are identical to the other three.

The parts marked in sheets B1, B2, C2 are to be discarded.

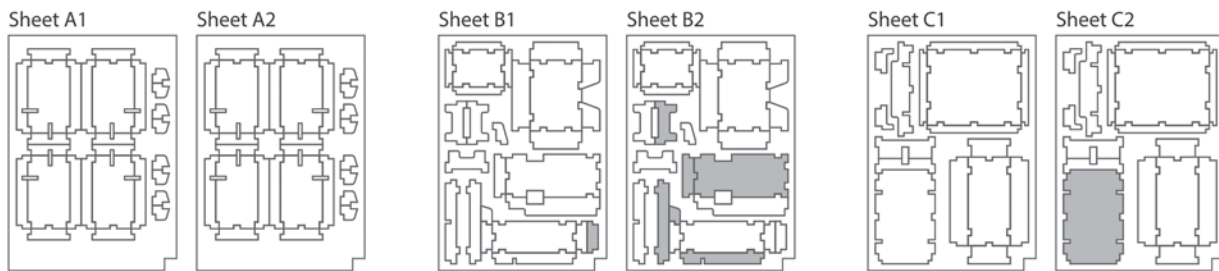
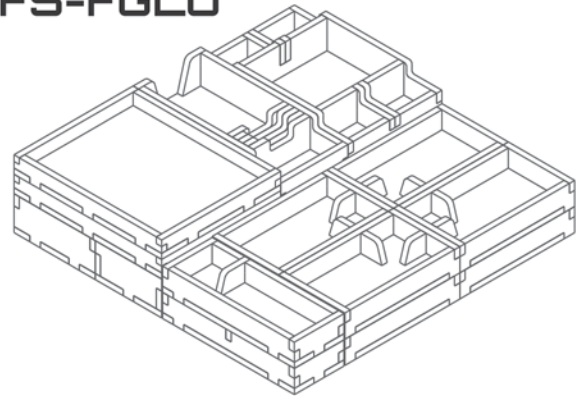
After assembly the trays are put in two layers in the original game box.

Ordinary PVA glue is required when assembling each tray.

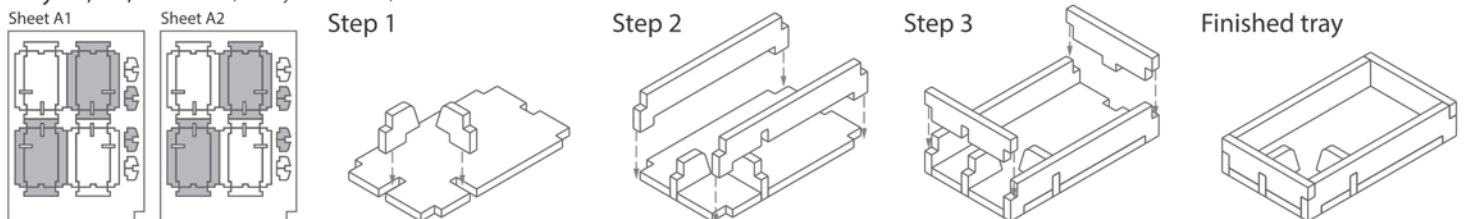
Please make sure you dry-assemble each tray correctly before gluing it together.

Please check [www.foldedspace.net](http://www.foldedspace.net) for general assembly tips.

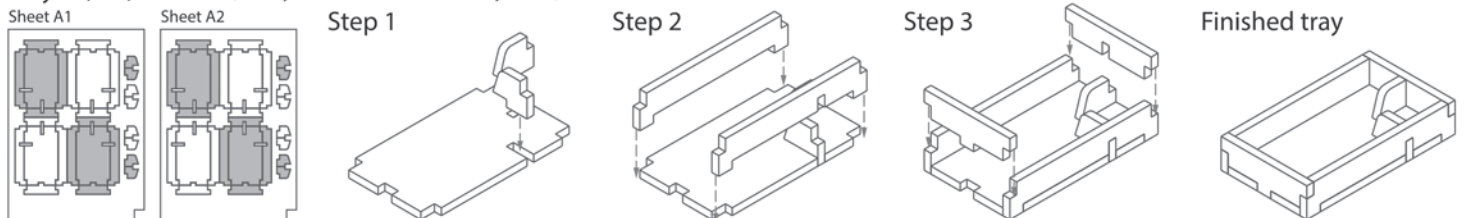
## FS-FGLO



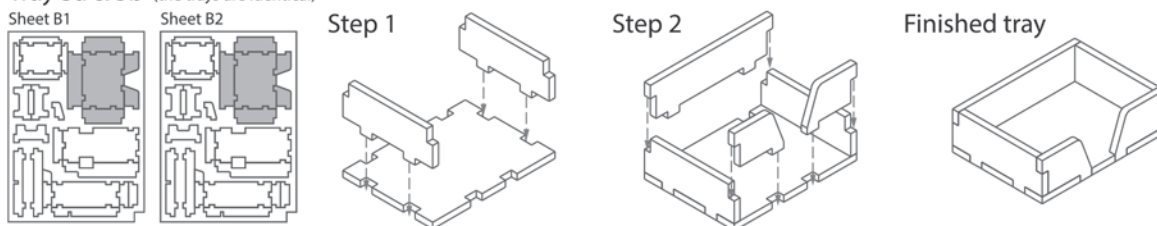
Tray 1a, 1b, 1c & 1d (the trays are identical)



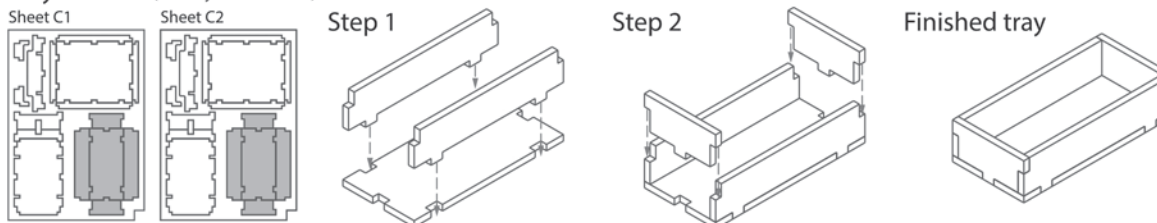
Tray 2a, 2b, 2c & 2d (the trays are mirrored versions of trays 1a-1d)



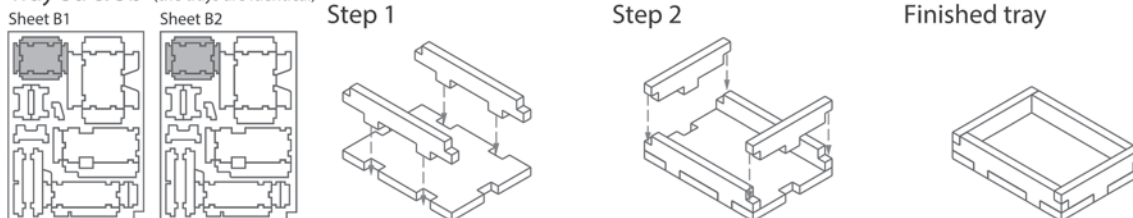
Tray 3a & 3b (the trays are identical)

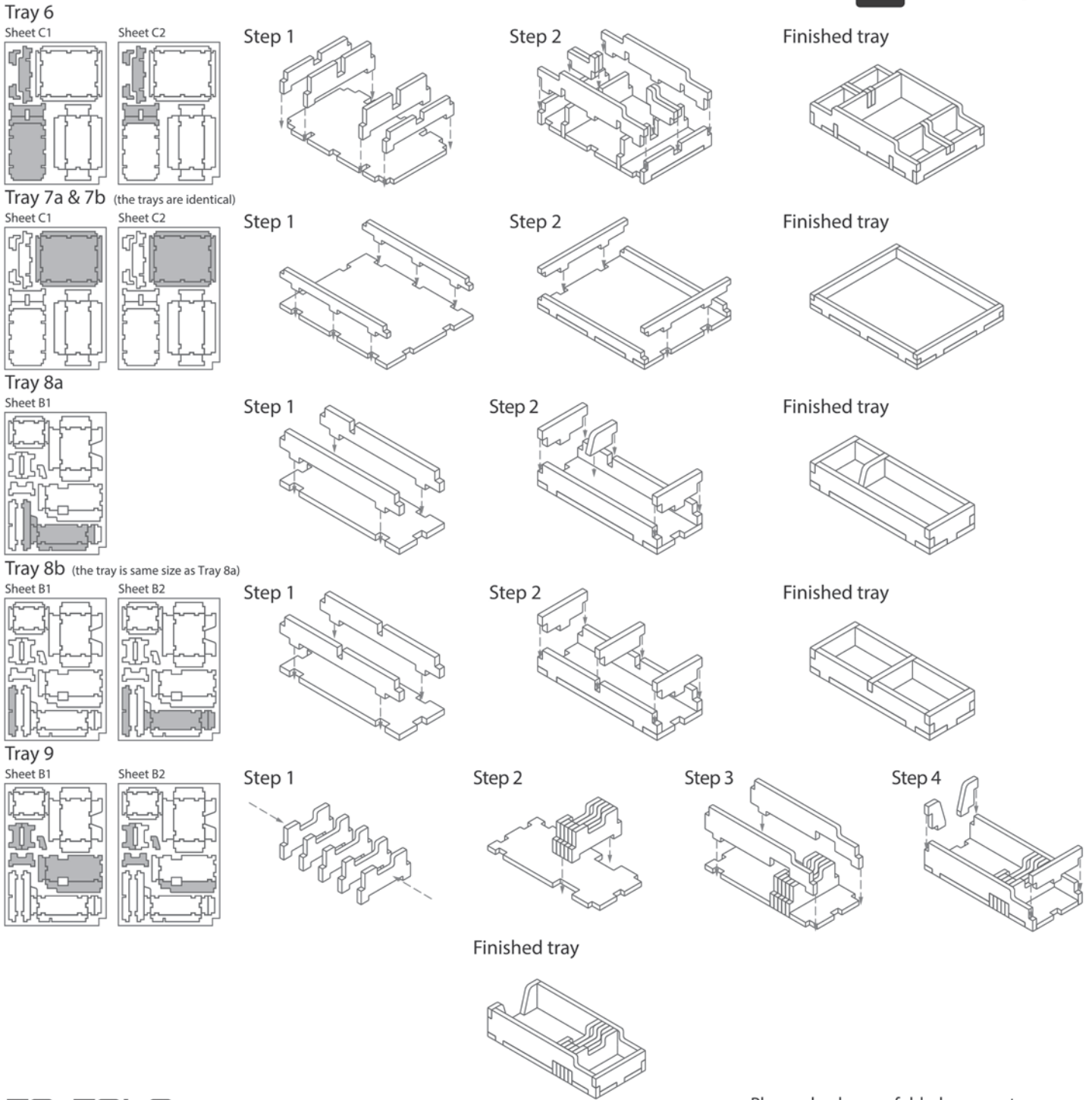


Tray 4a & 4b (the trays are identical)

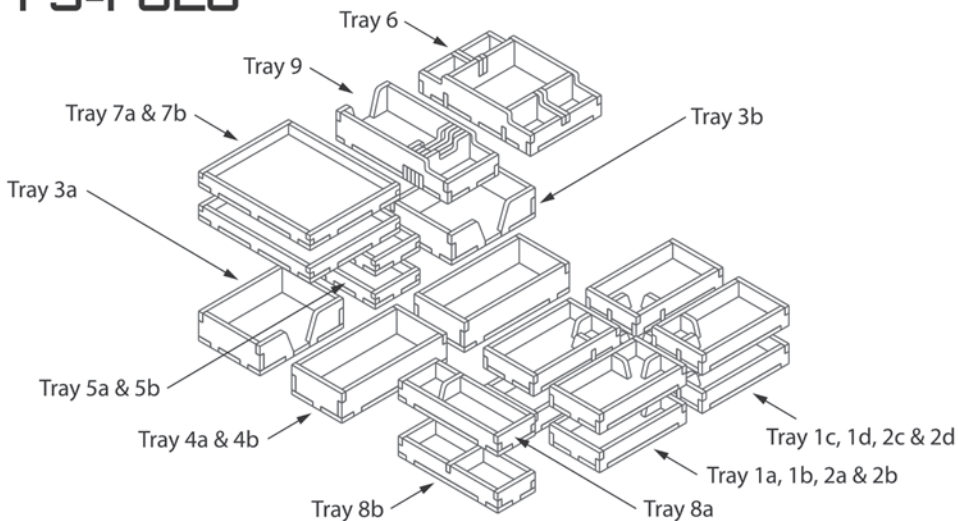


Tray 5a & 5b (the trays are identical)





## FS-FGLO



Please check [www.foldedspace.net](http://www.foldedspace.net) for photos of this insert in use.

### Tray legend:

- Tray 1a, b, c, d - player pieces
- Tray 2a, b, c, d - player pieces
- Tray 3a, b - large cards
- Tray 4a - tier 2 resource buildings
- Tray 4b - tier 3 resource buildings
- Tray 5a - completion markers
- Tray 5b - vote tiles
- Tray 6 - road tiles & coins
- Tray 7a, b - prestige building tiles
- Tray 8a - player pieces
- Tray 8b - influence tokens
- Tray 9 - small cards, trade stalls & active player token